

REAP Executive Committee Meeting Agenda
Wichita Workforce Center - 2021 N. Amidon, #1100
OR Zoom: <https://us02web.zoom.us/j/87961157122>
September 7, 2023 ~ 11:30am

1. **Welcome and Introductions:** Kelly McElroy, Newton City Manager, Vice-Chair (11:30)
2. **Approval of Minutes from Executive Committee Meeting from August 3, 2023:**
Kelly McElroy, Newton City Manager, Vice-Chair (11:35)
Recommended Action: *Approve as presented*
3. **Kansas Legislative Update:** Kimberly and Josh Svaty (11:40)
Kimberly and Josh Svaty will provide an update on the South Central Legislative Delegation.
Recommended Action: *Receive and File*
4. **South Central Kansas Transportation Infrastructure Projects and Priorities:** Keith Lawing (p. 7) (11:55)
 - [Local Consult Process - KDOT IKE Program \(ksdot.gov\)](https://ksdot.gov)
 - South Central Region- October 5, 1:30-4:30, Meridian Center, Newton
 - Wichita Metro- October 18, 9:00 am – Noon, WSU Hughes Metropolitan Complex
 - K-254 Corridor Management Plan
 - Commercial Air Service Update
 - Regional Public Transit Studies**Recommended Action:** *Take appropriate action*
5. **RETAINWORKS:** John Costello – RETAINWORKS Outreach Coordinator, Workforce Alliance (pp. 8 - 25) (12:10)
RETAINWORKS is a special program to help employees return to work after injury or illness and is partnering with local governments around the state.
Recommended Action: *Receive and File*
6. **Roadtrip Nation:** Keith Lawing (12:30)
The Workforce Alliance, USD 259, and several other local partners collaborated to bring Roadtrip Nation to the region to develop a career awareness hub for students and job seekers and a Roadtrip Nation documentary that will air nationally on PBS on September 28 and October 5. [Paths Across Kansas | Roadtrip Nation](#) "Paths Across Kansas".
Recommended Action: *Receive and File*
7. **Community Updates:** (12:45)
REAP members will be asked to share any news of note and happenings of interest in the region.
8. **Adjourn:** (1:00)
NEXT MEETING: October 12, 2023, Suggested topics: Commercial Air Service and Digital Literacy Strategies

REAP Executive Committee Meeting Minutes

Wichita Workforce Center

2021 N Amidon Ave, #1100

Wichita, KS 67203

August 3, 2023 ~ 11:30 am

1. Welcome and Introductions:

- Kelly McElroy, Vice, Chair called the meeting to order at 11:34 am and began introductions.

2. Approval of Minutes from the Executive Committee Meeting from July 6, 2023

ACTION TAKEN: Mayor Bryan Chapman (Sedgwick) made a motion to approve the July 6, 2023 REAP Executive Committee Meeting Minutes as presented. Mayor Ashley Velazquez (Kechi) seconded. MOTION PASSED UNANIMOUSLY.

3. 2023 Kansas Legislature Update:

- Kimberly Svaty stated she and Josh have attended two of the big three summer conference which were State Night at ALEC and the CSG conference. NCSL will be in two weeks in Indianapolis.
- This fall there will be more than 80 days of interim committee meetings.
 - Mental Health: August 22-24
 - Homelessness: November 9
 - Energy and Utilities: October 19-20, and November 6 & 9. Since this is a broad topic, Kimberly is working closely with the Chair on what he is hoping to see out of the committee.
 - Water: This is a meeting of House members only and was supposed to be in Great Bend in the field, but has been moved to Topeka on August 21-22. It will focus on the Rattlesnake Creek issue.
 - Two dates have been authorized for the interim committee of taxation but those dates have not been decided yet.
- Continuing to work with REAP to schedule tours for the South Central Delegation.
 - Delegates will tour NIAR WERX on August 9 and Hunter Health on August 22.

ACTION TAKEN: Report was received and filed

4. Digital Skills and Outreach:

- Kaitlyn Downey, Digital Skills Coordinator with Workforce Alliance of South-Central Kansas oversees a grant-funded project that focuses on Digital Skills with an IT focus. Kaitlyn discussed the different types of resources and programs at the Workforce Center for the community and business. These courses are designed for a person to up skills or learn new skills in the IT or Tech industry.

- Google Careers is offered
 - Allows you to earn professional certifications through fully online courses.
- IBM Skills is more exploratory where people can get training to figure out what you are interested in.
- These courses are free for clients going through the Workforce Center and there are no prerequisites, but some age restrictions on course registration.
- Lead for America has awarded the Workforce Alliance a grant to hire a Fellow who will be able to push these programs into the more rural communities.
- Workforce Alliance also offers an open skills/digital skills lab which allows individuals who do not have a computer or home internet access to work at the Workforce Center. Kaitlyn is available for the digital skills lab from:
 - 1-4pm on Wednesdays at the Workforce Center
 - 11am-2pm on Thursdays at the Walters Branch Library
- Kaitlyn stated she is happy to come out and present to your communities about the programs and provide more details.
 - She can arrange to have a digital skills class in your area or train someone in your community how to use the programs.
- You can reach out directly to Kaitlyn at KDowney@workforce-ks.com for any additional questions or if you would like her to come present in your community.

ACTION TAKEN: Report was received and filed

5. City-to-City Tour Summary:

- Katie Dawes, Mayor Velazquez, and Commissioner Meitzner attended the City to City Trip with 70 plus business and city leaders in Colorado Springs, Colorado from July 12 – 14. It was a very informative meeting where ideas and collaboration were encouraged.
 - One of the topics of discussion was the City of Champions Projects. These projects were aimed to increase tourism and economic growth.
 - The group visited the United States Air Force Academy where they learned about the framework for creating Leaders of Character. Many of these leaders of character have remained in the Colorado Springs Community and work in director and executive level positions after transferring out of active duty.
 - The group was told that there are approximately 125,000 actives, retired, and reservists in the city and that nearly 2/3 of the population are in some way connected to the military.
- Mayor Ashley Velazquez was impressed by how the different organizations were willing to acknowledge their failures and learn how to grow from the barriers they face. They had clear missions in what they wanted. Ashley also emphasized how networking is so important and how we can learn from each other.
- Lauren Clary, also on the tour, added during the cybersecurity portion of the visit, it was nice to see that we are already implementing and doing a lot of the things in the Innovation Campus that Colorado Springs is just now putting an emphasis on.

6. The Wichita Dwight D. Eisenhower National Airport Update:

- Katie Dawes stated that the air service initiative of direct flights to Washington DC REAP supported in May has passed.
 - Nonstop flights to Washington DCA will begin on January 8, 2024 with American Airlines.
 - Depart ICT at 3:30 pm; arrive DCA at 7:15 pm
 - Depart DCA at 11:30 am; arrive ICT at 1:45 pm
 - Wichita will be DCA's 106th nonstop destination
 - DCA has on average 442 daily departures with American Airlines being the largest carrier with 255 daily departures.
 - Daily non-stop flights to Las Vegas will begin November 5 with Southwest.
 - Daily non-stop flights to Phoenix will begin November 5 with American Airlines.
 - Non-stop flights to Miami will begin November 11 through March 30, on Saturdays only.

7. Kansa Economic Outlook Conference in Wichita:

- Katie Dawes stated REAP is sponsoring a table at the Economic Outlook Conference in Wichita on Thursday, October 5, 2023, from 7:30 to 11:30 AM. There are currently eight available seats. Katie will email out more information. Please let her know if you wish to attend.
- It was mentioned the conference could coincide with the October REAP meeting.

ACTION TAKEN: Mayor Ashley Velazquez (Kechi) moved to change the October 5 REAP meeting to another date as to not coincide with Kansas Economic Outlook Conference, Mayor Bryan Chapman (Sedgwick) seconded the motion October meeting date will be changed and announced via email. MOTION PASSED UNANIMOUSLY.

8. Community Updates:

- Kelly McElroy announce her resignation of City Manager of Newton in October. Stated the job posting is on the Newton website.
- Mayor Bryan Chapman said the Sedgwick Fall Festival will be September 16-17.
- Mayor Ashley Velazquez said the Kechi Fair will be October 7.
- Councilmember Homer Henry stated Greater Andover Days will happen this fall.
- Councilmember Justin Shore stated the Clearwater Fall Festival would be October 6-8.
- James Williams said Black Hills Energy will be observing 811 Day on August 11.
- Councilmember Nick Engle stated he is working with the Derby City Manger and Council to push the Affordable connectivity Plan. They will be promoting it with the school district and are working with Cox communications.
- Daniela Rivas stated McPherson College was given a \$500 million endowment and then the donor doubled it to a \$1 billion commitment. Construction has already started on the college. The city is also working on a new strategic plan.
- Diane Tinker-Hurst stated the central corridor for the Biomedical campus has been approved. It will open for students in 2026.

- Keith Lawing with the Workforce Alliance discussed the Road Trip Nation Paths Across Kansas project. This video will air on PBS on September 28 and October 5. It highlights South Central Kansas occupations through the eyes of a group of WSU students.
- Chip Westfall said the Harvey County Fair will start tonight August 3. KDOT is also starting their Safety Corridor Study from the North Junction to Newton
- Dr. David Guo stated the Hugo Wall School will start a national search for the next Hugo Wall School Director. He also stated he would like to rebuild the relationship the Hugo Wall School once had with REAP by working together and allowing students hands on experience.
- Mason Witzke with Senator Moran's Office stated Congress just broke for summer recess and will be back in September. Upon return they will have 12 appropriations bills to review.
- Mayor Terry Somers said the Mount Hope Prairie Festival is getting ready to start August 19.

9. Adjourn:

- Meeting was adjourned at 12:46 pm.

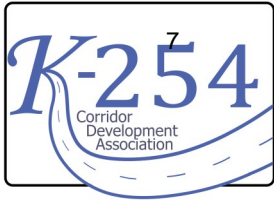
NEXT MEETING: *Our next meeting will be Thursday, September 7, 2023, at 11:30 a.m.*

Attendees:

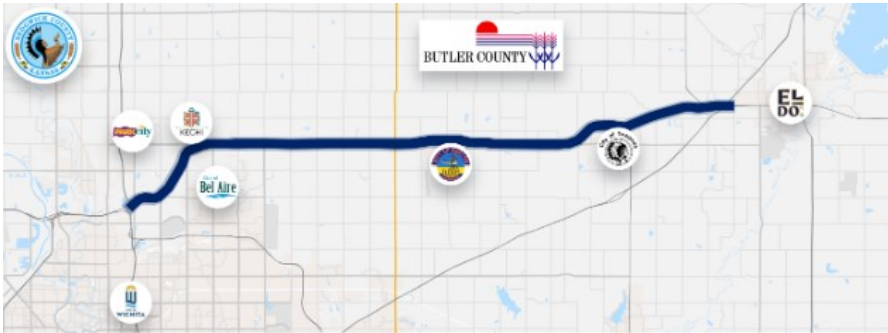
| Name | City | In Person | Zoom |
|----------------------------|-------------------------|-----------|------|
| James Williams | Black Hills | X | |
| Tim Boese | GMD2 | | X |
| Justin Henry | USD 265 Goddard | X | |
| Mayor Ashley Velazquez | Kechi | X | |
| Lauren Cleary | KS Gas Service | X | |
| Kelly McElroy | Newton | X | |
| Katie Dawes | REAP | X | |
| Mayor Terry Somers | Mount Hope | X | |
| David Guo | Hugo Wall School/WSU | X | |
| Chip Westfall | Individual Member | X | |
| Kaitlyn Downey | Workforce | X | |
| Homer Henry | Andover | X | |
| Mason Witzke | Office of Senator Moran | X | |
| Mayor Bryan Chapman | Sedgwick | X | |
| Councilmember Justin Shore | Clearwater | X | |
| Tyler Ward | SKEDD | | X |
| Chad Parasa | WAMPO | | X |
| Diane Tinker Hurst | WSU | | X |

| | | | |
|-------------------------------|-----------------------------|---|---|
| Will Black | Haysville | | X |
| Josh Svaty | Gencur Svaty Public Affairs | | X |
| Kimberly Svaty | Gencur Svaty Public Affairs | | X |
| Anthony Swartzendruber | Harvey County | | X |
| Shelley Paasch | Office of Broadband | | X |
| Commissioner Charles Jennings | Arkansas City | | X |
| Morgan Barnes | Office of Broadband | | X |
| Kimberly Jones | Office of Broadband | | X |
| Keith Lawing | Workforce Alliance | X | |
| Kim Uttinger | REAP/Workforce Alliance | X | |
| Councilmember Nick Engle | Derby | X | |
| Daniela Rivas | McPherson | X | |
| | | | |

K-254 Corridor Management Plan



The Kansas Department of Transportation (KDOT) is developing a corridor management plan for K-254 in Sedgwick and Butler counties. The area includes 22 miles of K-254 from Wichita on the west to El Dorado on the east (and within 1 mile of the highway). The goal of the K-254 Corridor Management Plan is to establish future land development and an access management approach that serves the communities while keeping traffic moving efficiently and safely.



During the creation of the management plan, KDOT in collaboration with a consultant team consisting of Garver, Vireo, Development Strategies, and Professional Engineering Consultants (PEC) have held and will continue to hold public and stakeholder meetings to understand what you the community would like to see. The following areas were identified during the June meetings.

| ISSUES | | OPPORTUNITIES | |
|---|---|--|--|
| <ul style="list-style-type: none"> Crashes and fatalities Dangerous intersections Lack of uniform medians Failure to see stop signs Difficulty crossing intersections Bridges with weight restrictions for busses and trucks Speeding drivers and other risky driving behaviors Lack of signage | <ul style="list-style-type: none"> School traffic mixed with industrial traffic Confusion among drivers with signage, medians, left turns, and pavement markings Inconsistent acceleration lanes Lane lines are not reflective and dangerous at night or during inclement weather | <ul style="list-style-type: none"> Economic development Population and housing growth Electronic signs Camera system to detect accidents or traffic Parallel access roads in high volume areas Utility corridor for expanding water supply Rumble strips to alert for stop signs or intersections | <ul style="list-style-type: none"> Improved access to Jabara Airport and development of surrounding land Flyovers for key roads to keep traffic flowing Clover leaf interchanges or roundabouts Additional turning lanes Add acceleration/ deceleration ramps, frontage roads, and alternate connections Improved lighting |

Help us continue to understand the issues and opportunities along the K-254 Corridor and how we can make improvements for the future!

WE NEED
YOUR HELP!

Attend the KDOT Local Consult Process to express your support for the K-254 Corridor Management Plan and Improvements.

KDOT Local Consult

- South Central Region—Meridian Center**
Thurs., October 5 | 1:30 - 4:30 pm
1420 E. Broadway Court, Newton, KS
- Wichita Metro—WSU Metro Complex**
Weds., October 18 | 9:00 am - 12:00 pm
5015 East 29th St N, Wichita, KS

RETAIN WORKS

Retaining
Employment
and Talent After
Injury/Illness
Network



Preparation of this document was funded by the U.S. Department of Labor and⁹ the Social Security Administration to the Kansas Department of Commerce in the amount of \$21.6 million dollars of which \$14,543,706 has been provided. 100% of grant funding is from U.S. Federal funds.

This document does not necessarily reflect the views or policies of the U.S. Department of Labor, nor does mention of trade names, commercial products, or organizations imply endorsement by the U.S. Government.

Equal Opportunity Employer/Program – Auxiliary aids and services are available upon request to individuals with disabilities. Any individual with a disability may request accommodations by contacting the Disability Resource Coordinator at the Workforce Centers, 316-771-6800, TDD: 711 or 1-800-766-3777, (admin@workforce-ks.com).



ODEP

Office of Disability
Employment Policy



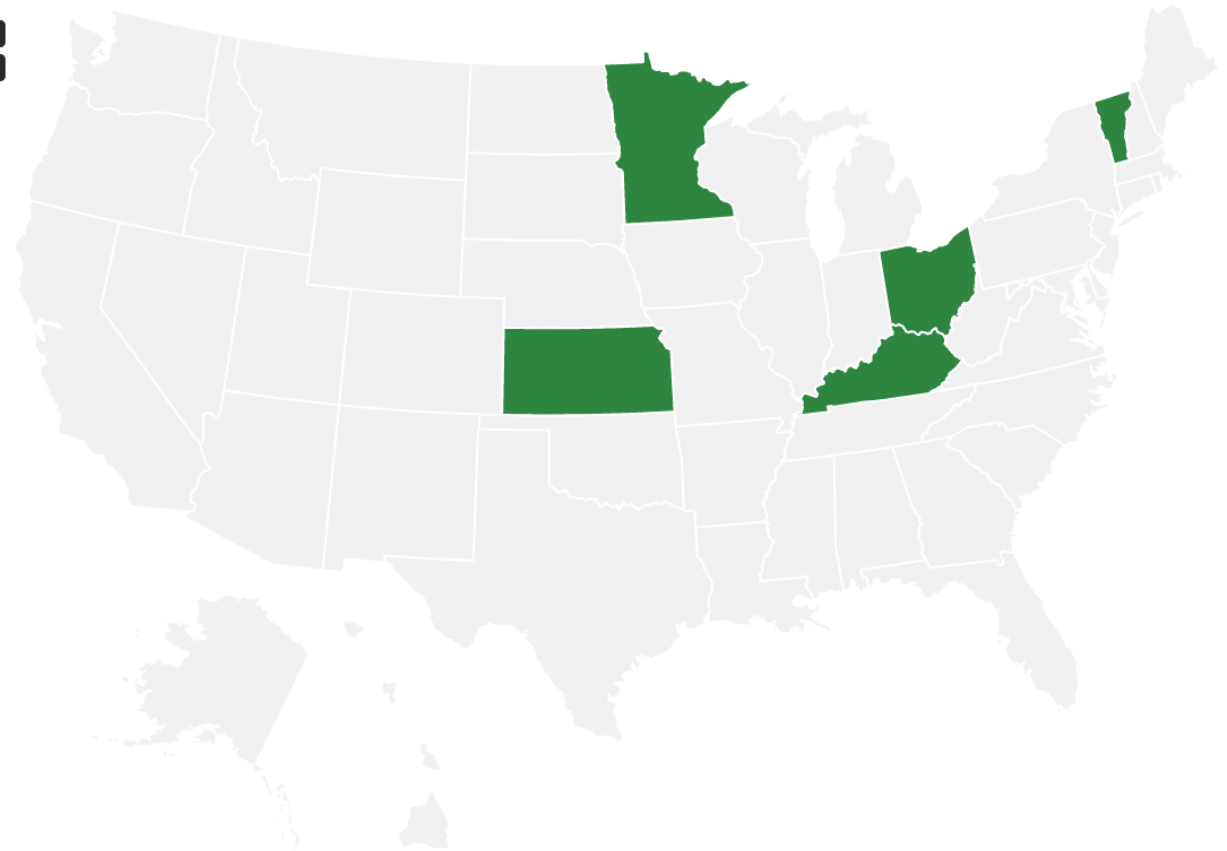
RETAIN
WORKS

What is **RETAINWORKS**?

11

Retaining
Employment and
Talent
After
Illness/Injury
Network

State Awards



Employees participating in SAW/RTW programs can:

- Retain their jobs and income
- Avoid long-term unemployment
- Speed medical recovery by encouraging injured workers to maintain normal or modified work schedules
- Reduce risk of re-injury
- Stay physically conditioned and mentally alert
- Maintain daily structure and social connections provided by work
- Maintain job skills
- Reduce impact of injury on employee's family
- Reduce likelihood of secondary complications, such as depression, that may delay or complicate recovery

National Safety Council - 2017 Report

| On-the-Job Injuries <i>in 2015</i> | Off-the-Job Injuries <i>in 2015</i> |
|---|--|
| 65 million missed workdays | 295 million missed workdays |
| \$142.5 billion in economic costs | \$358.3 billion in economic costs |
| 50 million projected future missed workdays due to 2015 injuries | 625 million projected future missed workdays due to 2015 injuries |

Do employees benefit from staying on the job?

Economic Outcomes:

- Eliminating financial distress that occurs through long term unemployment
- Avoiding unplanned expenses
- Maintaining family roles

Health Outcomes:

- Improving quality of life – research shows that most people are happier when they are working
- Enhancing physical conditioning and mental health and alertness and reducing relapse or re-injury
- Improved patient satisfaction

YES, LOTS!

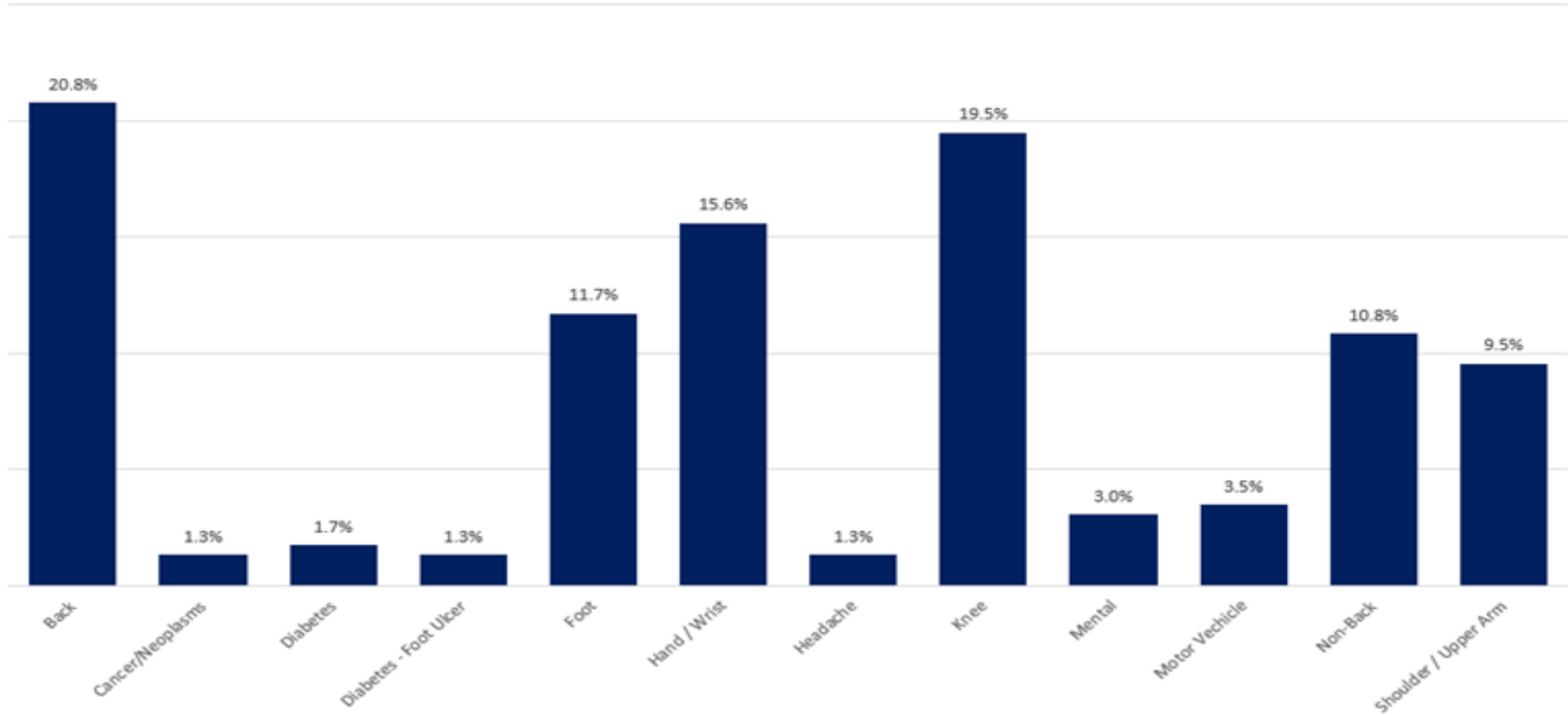
Impact of OFF- the- Job Injuries and Illness

Millions of American **workers leave the workforce annually** after experiencing an injury or illness.

Non-occupational injuries and illnesses (off-the-job) are **eight times more common** than those that occur on-the-job.

Hundreds of thousands of workers receiving state or federal **disability benefits has a negative impact on our workers, employers, and communities.**

Top Ten Illness/Injury



A blue pentagon with a white border, containing white text.

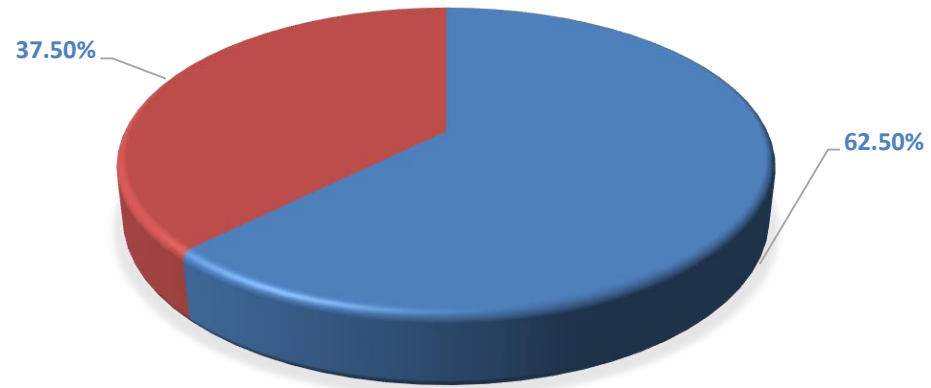
**Mental Health issues
cost businesses over
\$51 million dollars a
year.**

- 30% of disability claims are attributed to mental health
- 20%-30% experience a relapse after return to work
- Rates of anxiety and depression are traditionally 3-5 times higher for those that are on Long Term Disability

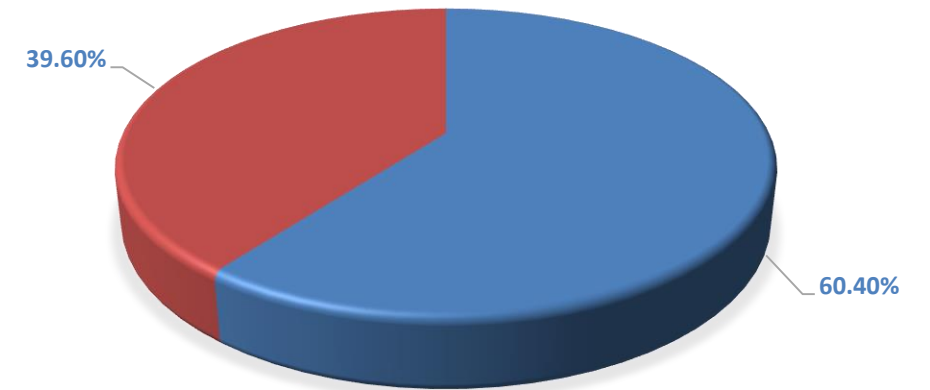
Disability Employment Snapshot

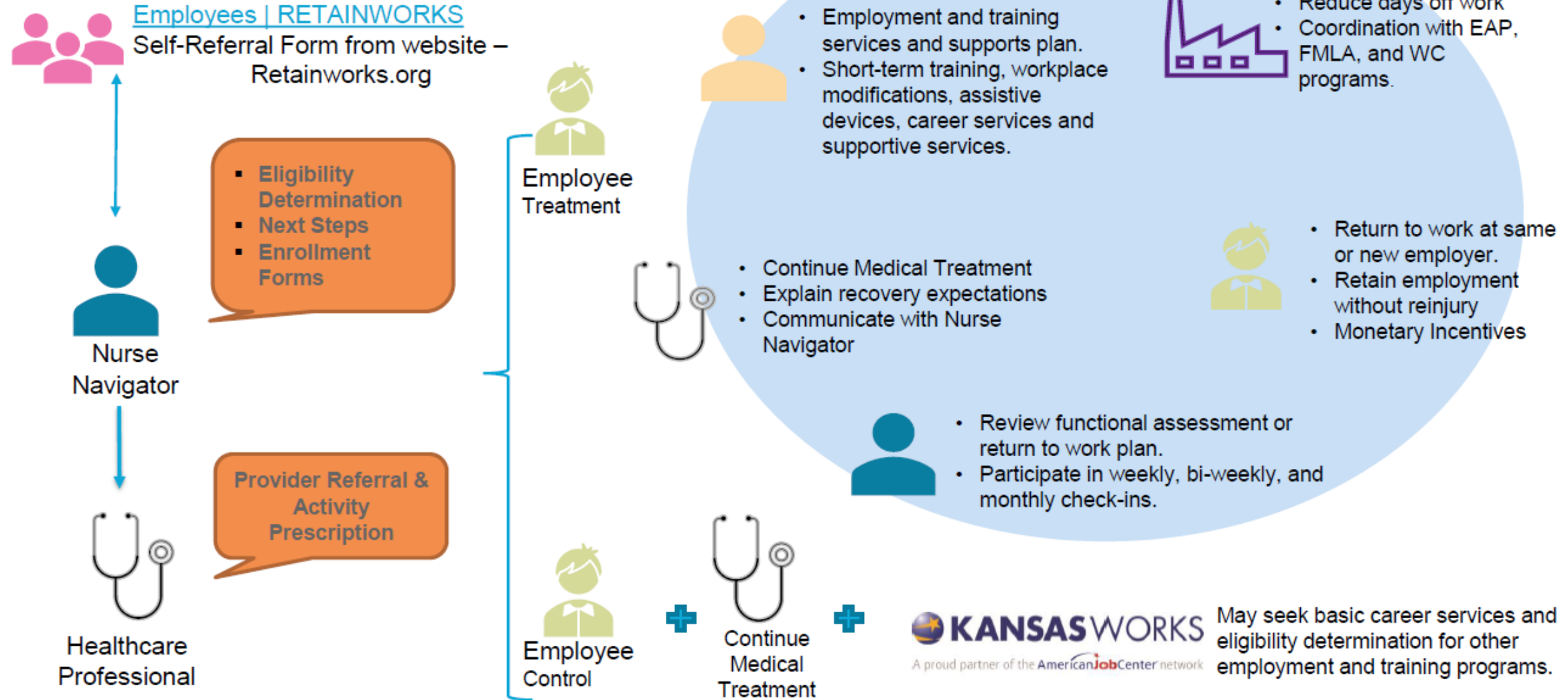


**2022 LABOR FORCE PARTICIPATION-
W/DISABILITY**

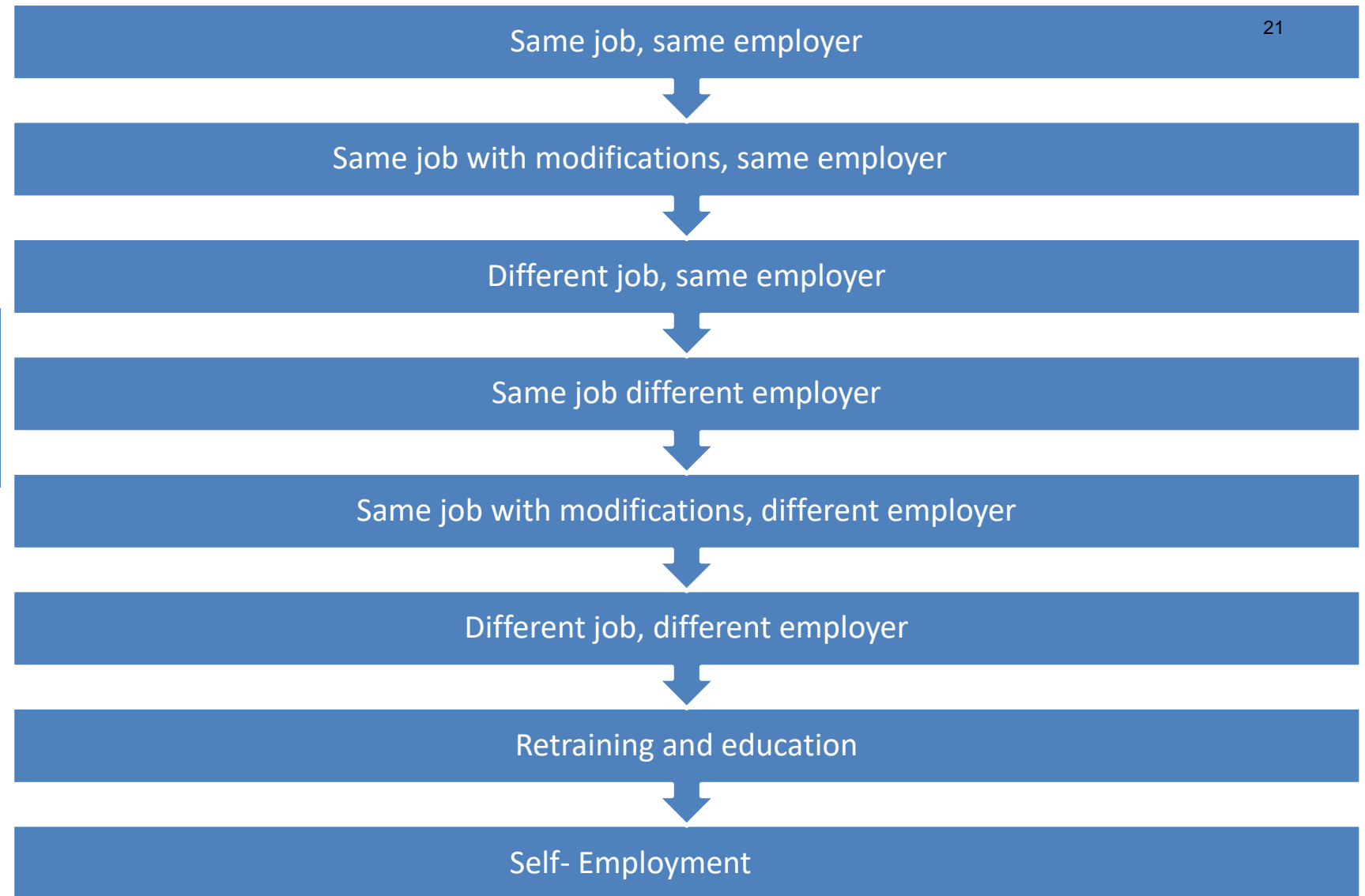


**2023 LABOR FORCE PARTICIPATION-
W/DISABILITY**





Return-to-Work Hierarchy

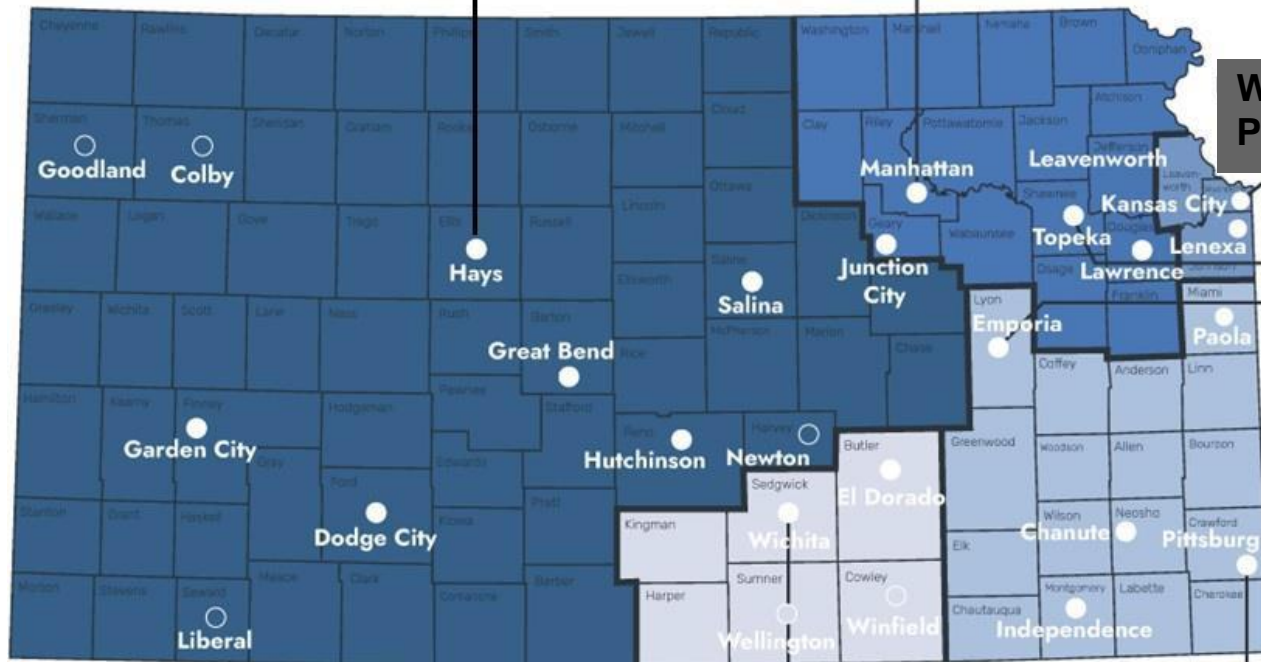




Kansas WorkforceONE

Heartland Works, Inc.

Workforce Partnership



Workforce Alliance of Southcentral Kansas

Southeast KANSASWORKS

Business Services Contacts

Kansas WorkforceONE

Micaela Madrid-Calvillo

micaela@kansasworkforceone.org

Heartland Works, Inc.

Jenny Wirtz

jwirtz@heartlandworks.org

Workforce Partnership

Shellie Lee

shelliel@workforcepartnership.com

Workforce Alliance of Southcentral KS

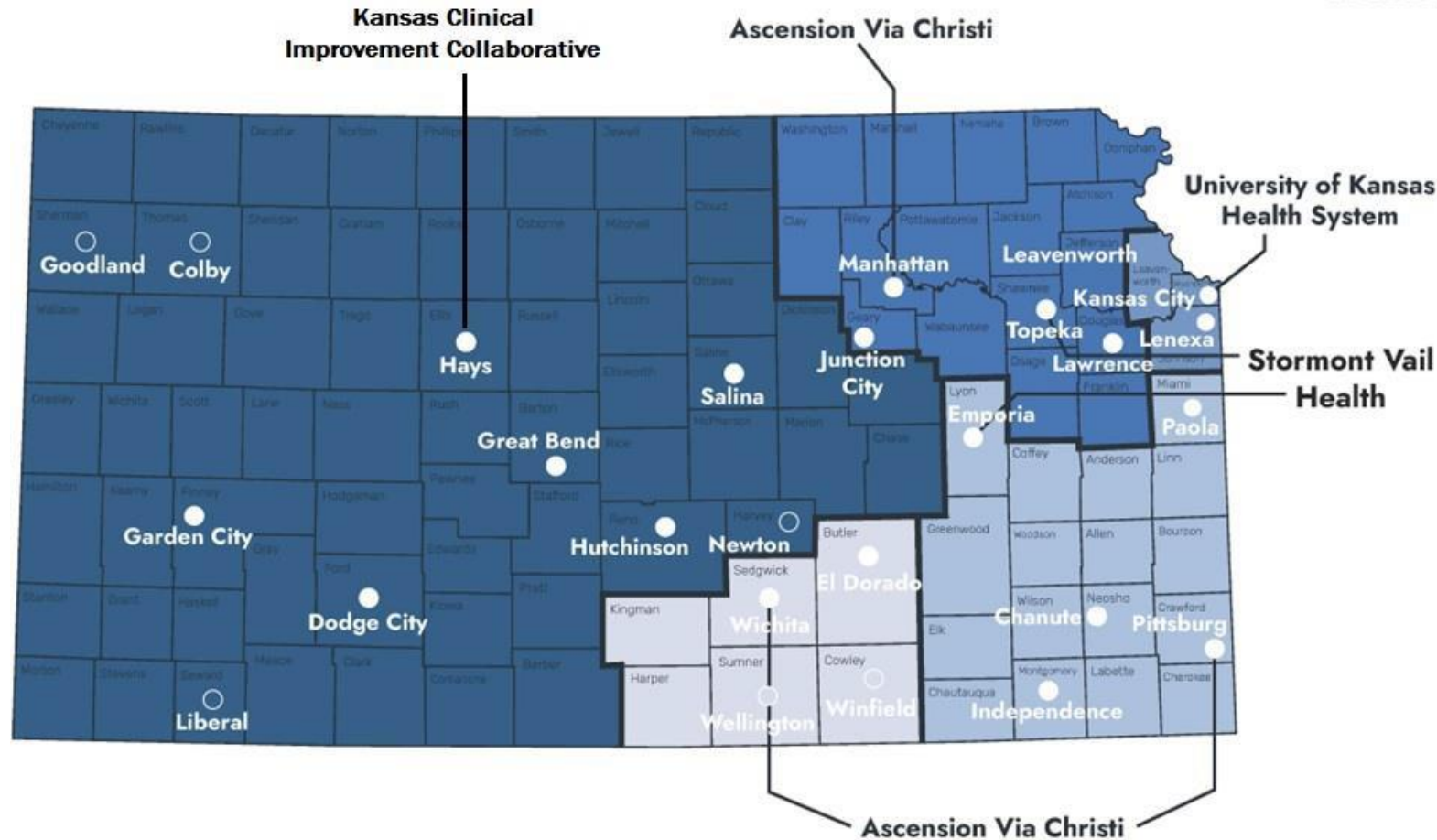
John Costello

jcostello@workforce-ks.com

Southeast KANSASWORKS

Jim Jenkins

jjenkins@sekworks.org



Kansas Care Collaborative

Janet Richardson-Barce

jrichardson-barce@kumc.edu

Stormont Vail Health

Carrie Mitzel

carrie.mitzel@stormontvail.org

The University of Kansas Health System

Janet Torlina - jtorlina@kumc.edu

Ascension Via Christ – Manhattan

Kendall Runnebaum

kendall.runnebaum@ascension.org

Ascension Via Christi – Wichita and Pittsburg

Jodi Hearn - jhearn@workforce-ks.com

RETAINWORKS Questions?

John Costello

RETAINWORKS Outreach Coordinator

jcostello@workforce-ks.com

316-771-6617

<https://www.linkedin.com/in/cozict82/>

Visit our website

<https://retainworks.org/>



RETAIN WORKS

Retaining
Employment
and Talent After
Injury/Illness
Network

retainworks.org